

ENERAC 700 AV

- Highly Accurate NDIR CO, CO₂ And HC Sensors
- Wireless Bluetooth™ Communication
- On-Board Printer
- Flexible Sampling Probe
- Free Data Logging Software (optional)

CO

CO₂

HC

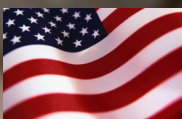
O₂

NO_x

AFR

Lambda (λ)

ER



Enerac brings you the 700 AV... The 5 gas analyzer designed for supporting the automotive and vehicle mobile engine exhaust emissions market

800-695-3637 / www.enerac.com

MADE IN THE USA

MODEL 700 AV SPECIFICATIONS

MEASURED PARAMETERS	RANGE	RESOLUTION	ACCURACY	SENSOR TYPE
Ambient Temperature	0-150 °F	1 degree F or C	+/- 2 ° F M	RTD
Stack Temperature (net)	0-2,000 °F (1,100 °C)	1 degree F or C	+/- 2 ° F M	Type K Thermocouple
Stack Velocity / Flow	0-150 ft/sec	1 ft/sec	Meets EPA Method 2	Type S Pitot Tube
Oxygen (O ₂)	0-25%	0.1 %	+/- 0.2% M	Electrochemical
Nitric Oxide (NO _(x))	0-5,000 ppm	1 ppm	+/- 0.2% M	Electrochemical
Hydrocarbons C _x H _y	0-30,000 ppm	1 ppm	+/-3% M (Meets EPA method 25B)	NDIR
Carbon Monoxide (CO)	0-15%	0.01%	+/-3% M	NDIR
Carbon Dioxide (CO ₂)	0-20%	0.1%	+/-3% M	NDIR
COMPUTED PARAMETERS	RANGE	RESOLUTION	ACCURACY	
AFR (Air:Fuel Ratio)		0.01		
Lambda (λ)		0.01		
ER (Equivalence Ratio)		0.01		
Excess Air	0-1000%	1%	+/- .2%	



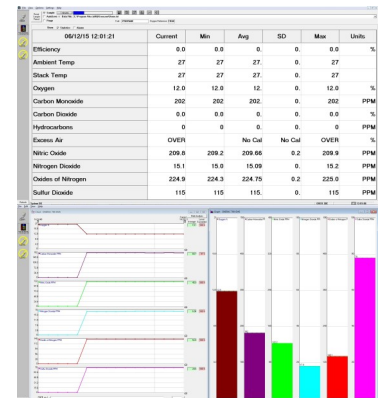
DIMENSIONS: 5.75"W x 9.75"H x 3.25"D

WEIGHT: 6lbs

Real Time Data Acquisition Software

POWER: 4 D size NiMH rechargeable

DISPLAY: 4&8 Line 128 x 64 pixel Dual



Enerac invented the first portable multi-parameter electronic combustion analyzer in 1979 in the US. Enerac still services this analyzer as well as all others. Today, Enerac still leads the market in research, design and ultimately the manufacturing of portable combustion emissions analyzers. Enerac only manufactures portable combustion emissions analyzers and is considered the experts in this field.

The Enerac Model 700 AV is used for a vast array of applications. The most common applications are those related to mobile engine combustion exhaust emissions, such as from cars, trucks, buses, boats, locomotives and motorcycles to name a few.

Built in Printer: 2" Graphic Thermal Printer

4&8 Line Dual Display: 4&8 line 128 x 64 pixel dual display with backlight. This 4&8 line dual display allows one to see many parameters at once or "zoomed in" closer look at a few specific parameters of interest.

NDIR Bench (Non Dispersive Infrared 3-Gas Sensor) Option: This sensor option allows the unit to detect and measure the CO (in % volume), CO₂ (as a direct measurement in % volume) and Hydrocarbons (C_xH_y). (meets EPA method 25B)

Control Key Pad: Easy to Use Key Pad makes a task a Snap. If you want to Print, Store Data, Zero Cal, Turn the pump on and off (and other options)...Just Press the easy to read buttons etc.

Enercom Software: With Enerac's Free Enercom software, one can use this spreadsheet software "live" and see real time data collection. The data collection is arranged for easy understanding and reporting. One can also "store" data internally in the Model 700 unit and download later. The Model 700 unit has RS 232, USB and Blue Tooth Communications capabilities.



Straight and Flexible Probe & Exhaust Clamp



Optional "S" Type Pitot Tube For Velocity Option